
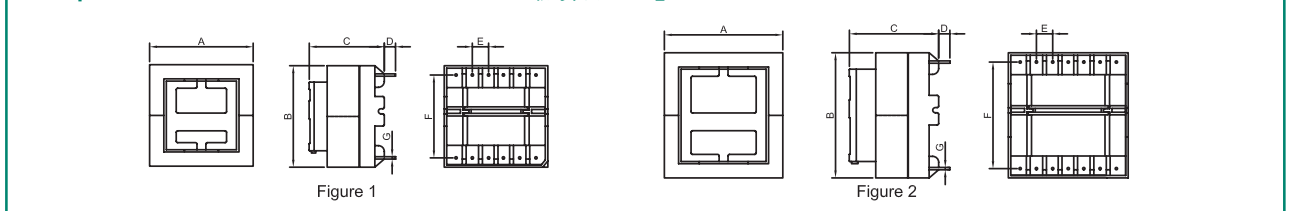


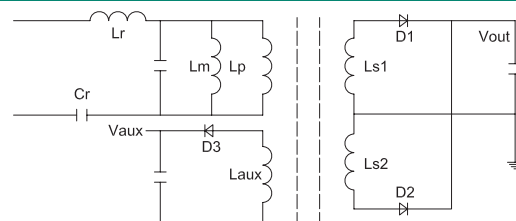
## LLC Model Resonance switching power transformer/LLC 諧振式開關電源變壓器

	<p><b>Core shape: EFD, ER &amp; ETD</b></p> <p><b>Features:</b></p> <ul style="list-style-type: none"> <li>• Leakage inductance integrated</li> <li>• Designed with split bobbin</li> <li>• Low-loss/High saturation magnetic flux density ferrite</li> <li>• Reinforce insulation design</li> <li>• Products meet the safety standards</li> <li>• RoHS Compliance</li> </ul>	<p><b>磁芯形狀: EFD, ER &amp; ETD</b></p> <p><b>特性:</b></p> <ul style="list-style-type: none"> <li>• 集成固定漏感值</li> <li>• 採用分體式骨架設計</li> <li>• 採用低損耗高飽和磁通密度磁芯設計</li> <li>• 加強絕緣設計</li> <li>• 產品符合安全標準</li> <li>• 符合RoHS標準</li> </ul>
---	---	--

### Shape and external dimension / 機械尺寸mm.



### Typical application / 典型應用.



### Electronical characteristics / 電氣特性

Core shape 磁芯形狀	EFD-25/30/6.5	ER28/28/9.9	ETD34/35/10.8	ER35/42/11.3	ETD39/42/12.7
No. of Terminals 針腳數	6+6	6+6	6+6	7+7	7+7
Dimension 尺寸mm					
Max.A	26.5	31.0	36.0	37.5	43.0
Max.B	32.0	31.0	36.0	45.0	45.0
Max.C	20.5	26.0	26.5	32.0	33.0
Min.D	3.0	3.0	3.0	3.0	3.0
± 0.3 E	4.1	5.0	5.5	5.0	5.8
± 0.5 F	25.0	25.0	28.0	37.0	36.0
± 0.1 ØG	0.8	0.8	0.8	1.0	0.8
Main inductance Lp (Typ.) 主電感(uH) Lp	540	545	621	523	275
Leakage inductance (Typ.) 漏電感(uH) LKG	70	70	110	100	60
Resonance Frequency 諧振頻率 KHz	128	128	128	128	128
Center leg area 磁芯中柱面積Ae mm <sup>2</sup>	62.93	85.88	96.50	110.72	127
Maximum output 最大輸出功率 VA	50	75	180	200	300
Drawing No. 圖紙號	Figure 1	Figure 1	Figure 1	Figure 2	Figure 2